

MONTHLY MEMBERSHIP PROGRESS REPORT

District 303

Results as of: 5/31/2020

GMT:

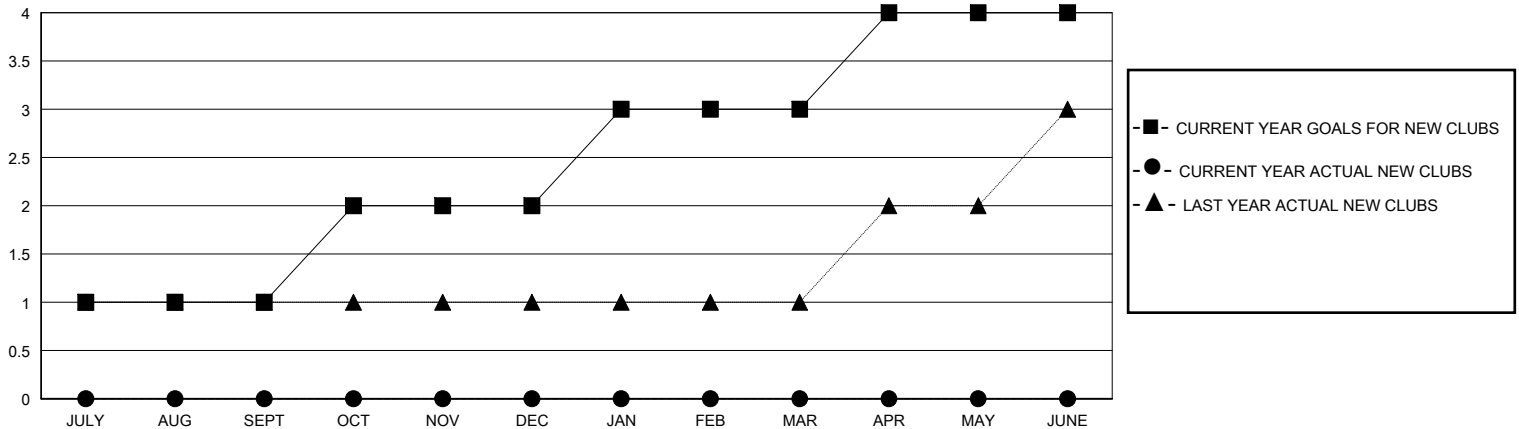
LOCATION HONG KONG, CHINA

GMT CA

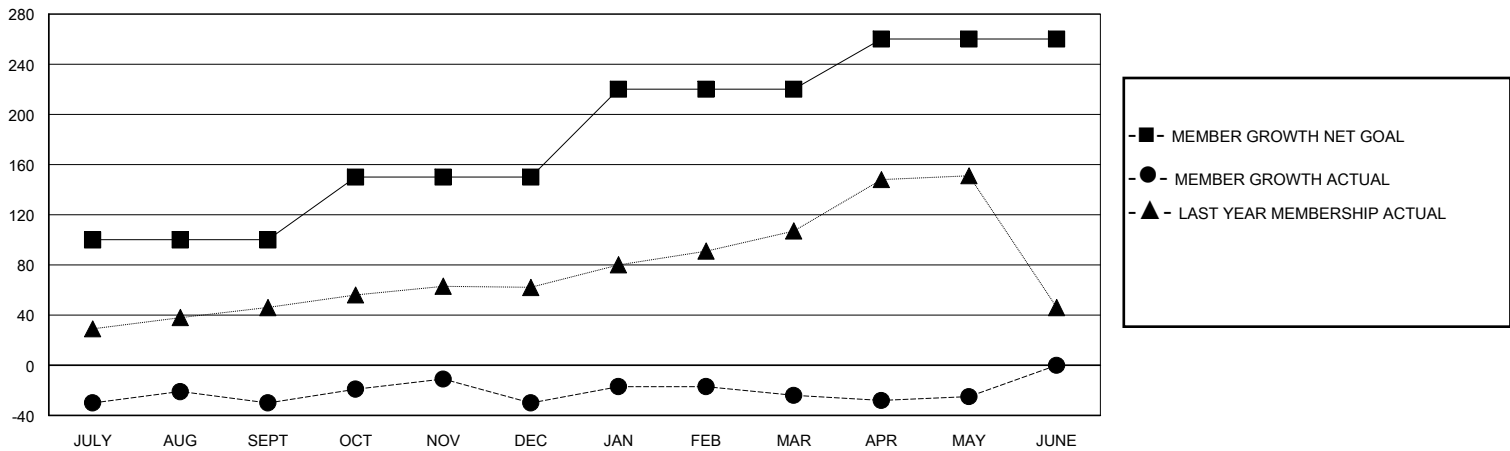
Clubs			
RESULTS FOR 2019-2020			
QUARTER	NEW CLUB GOAL	NEW CLUBS	DROPPED CLUBS
JULY/AUG/SEPT	1	0	0
OCT/NOV/DEC	1	0	0
JAN/FEB/MAR	1	0	0
APR/MAY/JUNE	1	0	0

Members			
RESULTS FOR 2019-2020			
QUARTER	MEMBER GROWTH NET GOAL	MEMBER GROWTH ACTUAL	DROPPED MEMBERS ACTUAL (including transfers)
JULY/AUG/SEPT	100	172	180
OCT/NOV/DEC	50	60	53
JAN/FEB/MAR	70	28	21
APR/MAY/JUNE	40	9	10

GOALS AND ACTUAL NEW CLUBS CUMULATIVE



GOALS AND ACTUAL MEMBERS CUMULATIVE



DROPPED CLUBS: 0

66 CLUBS OF 93 ADDED 1 OR MORE NEW MEMBERS

GENDER DISTRIBUTION

MALE 1,625 (72.19%)
FEMALE 626 (27.81%)

DROPPED MEMBERS

DECEASED	4
CLUB CANCELLED	0
OTHER	259
TOTAL	263

[CLICK HERE FOR CUMULATIVE MEMBERSHIP DATA](#)

TOTAL FAMILY UNIT MEMBERS	60
FAMILY MEMBERS PAYING HALF DUES	33